



# Fees & Course Schedule

DCU International Academy

**DCU** International  
Academy

# On-Campus Programmes for Adults

The fees listed below are effective from 01/10/2023

Programme	Weeks	2024
<b>General English for Adults</b>	2	€580
Students commence on selected intake dates. For intake date information, please <a href="#">see page 5</a> .	3	€870
	4	€1,160
	5	€1,450
	6	€1,740
	7	€2,030
	8	€2,320
	9	€2,610
	10	€2,900
	11	€3,190
	12	€3,480
	13	€3,770
	14	€4,060
	15	€4,350
	16	€4,640
	17	€4,930
	18	€5,220
	19	€5,510
	20	€5,800
	21	€6,090
	22	€6,380
	23	€6,670
	24	€6,960
<b>Academic Year Programme</b>	25	€5,475
General English & Exam Preparation (20 hours week)	30	€6,570
Students commence on selected intake dates. For intake date information, please <a href="#">see page 5</a> .	35	€7,665
	40	€8,760
	45	€9,855
	50	€10,950
Fee per extra week	-	€219
Examination fee	-	€220
<b>IELTS Exam Preparation</b>	8	€2,320
8 January - 1 March		
11 March - 3 May		
7 May - 28 June		
1 July - 23 August		
26 August - 18 October		
21 October - 13 December		
<b>Pre-Sessional Programme - 5 weeks</b>	5	€1,700
15 July - 16 August		
<b>Pre-Sessional Programme - 10 weeks</b>	10	€3,300
10 June - 16 August		
<b>IFY - International Foundation Programme</b>	30	€13,250
Intake: September 2024		
NCUK Registration & Examination Fee	-	€1,500

# Online Programmes for Adults

Programme	Weeks	2024
<b>Online Group Training</b> (flexible to your requirements)	Customised	by quotation
<b>Online General English</b> (2 weeks minimum)	From 2 weeks	by quotation
<b>Online General English - Private Tuition</b> (flexible to your requirements)	Customised	by quotation
<b>Online IELTS Exam Preparation - Private Tuition</b> (flexible to your requirements)	Customised	by quotation

## Other Fees

On-Campus	Unit	2024
<b>Course Registration Fee</b>	Once-off	€110
<b>Pre-Course Assessment and Course Materials Fee</b>	Once-off	€55
<b>Additional Course Book(s)</b>	Price per Book	€55
<b>Glasnevin Campus Library Student Access</b> (students attending programmes of at least 25 weeks' duration may apply for access to DCU Glasnevin Campus Library)	Once-off	€60
<b>Medical Insurance - 12 months</b>	-	€200
<b>Insurance for Short Term Students</b>	Per day	€5
<b>Individual Airport Transfer</b>	Each way	€150
<b>Return Airport Transfer for Groups*</b> (Groups of 5 more students, arriving and departing on same flight)	Per person	€150
<b>Day Trips</b>	<b>Unit</b>	<b>2024</b>
<b>Day Trip to Glendalough</b>	Per person	€85
<b>Day Trip to Galway</b>	Per person	€85
<b>Day Trip to Cork</b>	Per person	€85
<b>Day Trip to Carlingford</b>	Per person	€85
<b>Day Trip to Kilkenny City and Castle</b>	Per person	€85

## Other Fees

<b>Transport</b>	<b>Weeks</b>	<b>2024</b>
<b>LEAP Visitor Card</b> (Unlimited public transport on public bus, train and tram in Dublin for 1 week)	1 Week	€55
<b>LEAP Visitor Card</b> (Unlimited public transport on public bus, train and tram in Dublin for 2 weeks)	2 Weeks	€100
<b>LEAP Visitor Card</b> (Unlimited public transport on public bus, train and tram in Dublin for 3 weeks)	3 Weeks	€135
<b>LEAP Visitor Card</b> (Unlimited public transport on public bus, train and tram in Dublin for 4 weeks)	4 Weeks	€170

## Accommodation Options

<b>Accommodation</b>	<b>Duration</b>	<b>2024</b>
<b>Host Family - Home Stay - single room</b> (Price valid for period 1 September 2023 to 18 May 2024 and from 31 August 2024 to 31 December 2024)	1 Week	€280
<b>Host Family - Home Stay - single room</b> (Price valid for period 19 May 2024 to 30 August 2024)	1 Week	€350
<b>Host Family - Extra nights before / after course</b> (Available outside of summer only)	Per Night	€75
<b>DCU Glasnevin Campus Residence - Summer Only</b> (Price valid for period 19 May 2024 to 31 August 2024)	1 Week	€315
<b>DCU Glasnevin Campus Residence - 1 to 9 Nights</b> (Price valid for period 19 May 2024 to 31 August 2024)	Per Night	€99
<b>DCU All Hallows Campus Residence - Summer Only</b> (Price valid for period 12 May 2024 to 24 August 2024)	1 Week	€315
<b>Accommodation Placement Fee</b>	-	€110

Host Family accommodation is offered from 1 night before the course starts until the morning after course conclusion. Additional nights outside of course dates are charged at €75 per night.

For summer group residence options, please visit our website at [www.english.dcu.ie](http://www.english.dcu.ie).

# Adult Course Information & Intake Dates

## Timetable

Classes are held Monday to Friday. Class times are 09.00hrs-13.00hrs and 13.30hrs to 17.30hrs. It is our preference that students are placed to 09.00hrs-13.00hrs classes, but at peak periods it may be necessary to timetable some students to the period 13.30hrs to 17.30hrs.

The timetable for the courses is set by the centralised DCU Timetabling Office, which provides classrooms for all undergraduate, postgraduate and language students at DCU.

## Terms & Conditions

Please make yourself familiar with the Terms and Conditions of DCU International Academy and with any further information related to your programme:

- [For Groups](#)
- [For Individuals](#)

Please note the minimum age for students to attend a DCUIA adult programme is 17 years.

## Campuses

DCU International Academy is part of Dublin City University. The university holds lessons and activities on a number of campuses. Our primary teaching location for classes and activities DCU Glasnevin Campus.

Students should be aware that at peak times DCU International Academy may also hold classes at other DCU campuses including: DCU St Patrick's Campus and DCU All Hallows Campus. All campuses are located in north Dublin, within 2.5km of one another.

## Course fee includes:

- DCUIA Student ID card
- Welcome Pack
- Course certificate
- Exciting Student Experience Programme
- University Wi-Fi & Internet access

## National Holidays - 2024

Dublin City University will be closed for the following National Holidays:

- 1st January, New Year's Day
- 5th February, St Brigid's Day
- 18th March, St Patrick's Day
- 29th March, Good Friday
- 1st April, Easter Monday
- 6th May, May Holiday
- 3rd June, Bank Holiday
- 5th August, Bank Holiday
- 28th October, Bank Holiday
- 25th December, Christmas Day
- 26th December, St Stephen's Day

## Registration and Course Fee

### Students

DCU International Academy invites students to apply through our online booking system: [www.english.dcu.ie/apply](http://www.english.dcu.ie/apply)

Once an application has been submitted the student will receive an automated "Confirmation of Application" response. Applications will be processed within 1 - 3 working days and a response sent to the customer's email address. You must register with immigration if you are a non-EU/EEA national and you want to stay in Ireland for longer than 90 days.

Please note - Student Personal Insurance is a mandatory requirement for all students, to protect against illness and loss. Insurance will be automatically added to student fees invoice at registration stage.

### Partner Agents

DCUIA also invites partners to apply through our online booking system: [www.english.dcu.ie/partner-application-form](http://www.english.dcu.ie/partner-application-form)

## Programme Intake Dates

Intake	Day	Month
Intake 1	8th	January
Intake 2	22nd	January
Intake 3	12th	February
Intake 4	26th	February
Intake 5	11th	March
Intake 6	25th	March
Intake 7	8th	April
Intake 8	22nd	April
Intake 9	13th	May
Intake 10	27th	May
Intake 11	10th	June
Intake 12	24th	June
Intake 13	1st	July
Intake 14	29th	July
Intake 15	6th	August
Intake 16	19th	August
Intake 17	26th	August
Intake 18	9th	September
Intake 19	23rd	September
Intake 20	7th	October
Intake 21	21st	October
Intake 22	11th	November
Intake 23	2nd	December

# Junior Programmes, University Groups and Teacher Training

Our dedicated English language school specialises in organising programmes for groups which are customised to suit the needs and requirements of the participants.

Students benefit from a superb study environment at the heart of a modern university campus.

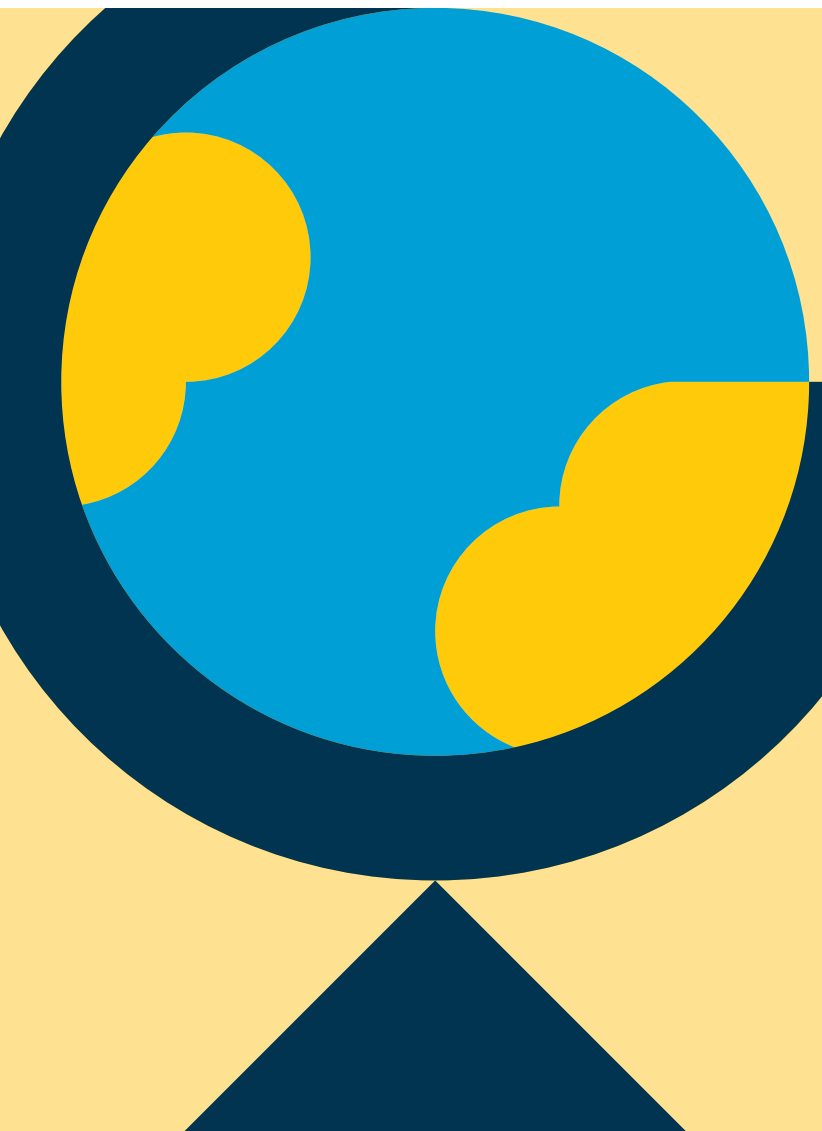
For more information about our bespoke programmes, please contact us by e-mail [english.courses@dcu.ie](mailto:english.courses@dcu.ie)

## IELTS Test Centre in Dublin

Dublin City University is an official IELTS test centre. We hold regular IELTS test dates for both IELTS Academic and IELTS General Training.


Our test centre is located on the DCU Glasnevin campus in Dublin 9, which is easily accessible by car or by public transport.

You can find out more information at [www.ieltsireland.com](http://www.ieltsireland.com).



**Dublin City University**  
**DCU International Academy**  
Glasnevin, Dublin  
D09 NA55,  
Ireland

T: +353 1 700 5678  
E: [english.courses@dcu.ie](mailto:english.courses@dcu.ie)  
W: [www.english.dcu.ie](http://www.english.dcu.ie)

 [@dcu.internationalacademy](https://www.instagram.com/dcu.internationalacademy)

 [@dcu.internationalacademy](https://www.facebook.com/dcu.internationalacademy)

 [@dcu.internationalacademy](https://www.youtube.com/dcu.internationalacademy)

 [/dcu-international-academy](https://www.linkedin.com/company/dcu-international-academy)